

Bryce - Secap 22K Address Printer

Unprecedented print quality and speed at a good price!

- For the mailing professional requiring unprecedented print quality and speed at a low price, the Bryce 22K tabletop address printer is just the answer.
- Printing 22,000 mail pieces per hour, the 22K can handle even the most demanding addressing jobs efficiently and reliably.
- 22K sets a new standard for high performance and low cost.
- The fixed head design of the 22K provides 1.5" of print coverage in a single bank of print heads, handling media sizes up to 13" x 15" and 1/8" thick.
- It is perfect for jobs that need to print a destination address and barcode within 9 address lines, as well as customized messages to the right or left of the address.
- The print heads are mounted on an innovative "swivel head" subsystem, making access to the print heads quick and easy.
- Barcodes and other graphics can be printed to the left or right of the address at resolutions of 150, 200, 300 or 600 dpi, using renowned Hewlett-Packard inkjet technology.
- In addition to supporting any Windows-compatible font, addresses can be printed with up to 12 different internal fonts, scalable from 4 to 30 point sizes, and can be combined with such styles as bold, italic, outline, and with varying widths.
- The Bryce 22K inkjet printer interfaces seamlessly with any PC, mini, or mainframe computer system. Windows 95®, Windows 98®, Windows NT® 4.0, Windows 2000®, and Windows XP® drivers are included.



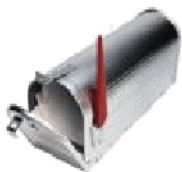
[Download PDF](#)

[Purchase Ink](#)

Bryce - Secap 22K Address Printer Specifications

| | |
|-----------------------------------|--|
| Throughput | Up to 22,000 #10 envelopes/hour in super draft quality Up to 16,500 #10 envelopes/hour in draft quality Up to 11,000 #10 envelopes/hour in letter quality Up to 5,500 #10 envelopes/hour in executive quality |
| Image Area | Total of 1.5" using 3 pens over image area of 13" x 13.5" |
| Media Size | 3" to 13"; Length 5" to 15.5" Thickness: up to 1/8" |
| Print Resolution | 150, 200, 300, 600 dpi horizontal 600 vertical |
| Print Modes | Super Draft, Draft, Letter, Executive |
| Fonts | All Windows true type fonts |
| Barcode | USPS, Planet Code Barcode, EAN-13/UPC-A Internal |
| Interface | Centronics Parallel or USB |
| Driver Compatibility | Windows 95, 98, 2000, NT, ME and XP |
| Printhead/InkJet Cartridge | Versatile Black, Spot Colors, HP 45 |
| Physical Characteristics | 14"W x 16"D x 15"H |
| Weight | 50 lbs. |
| Power | 115 Vac. 50/60 Hz |
| Certification | UL, CSA |

[|Secap 22K|](#) | [|22K-spec|](#) | [|22K_Print|](#)



All For Mailers

If you have any question please call

Toll Free 1-866-471-6764

<http://www.AllForMailers.com>

[/Home](#) / [/Address Printers](#) / [/Fixed Head](#) / [/Secap 22K](#) / [/22K_Print](#)

[|Home|](#) | [|CONTACT US|](#) | [|Refurbished|](#) | [|Software|](#) | [|Address Printers|](#) | [|Fixed Head|](#) | [|Shuttle Head|](#)
| [|Console Systems|](#) | [|Floor Models|](#) | [|Label Appliers|](#) | [|Wafer Sealers|](#) | [|Folder Inserters|](#)